



# Akemat U4 CNC Conversion

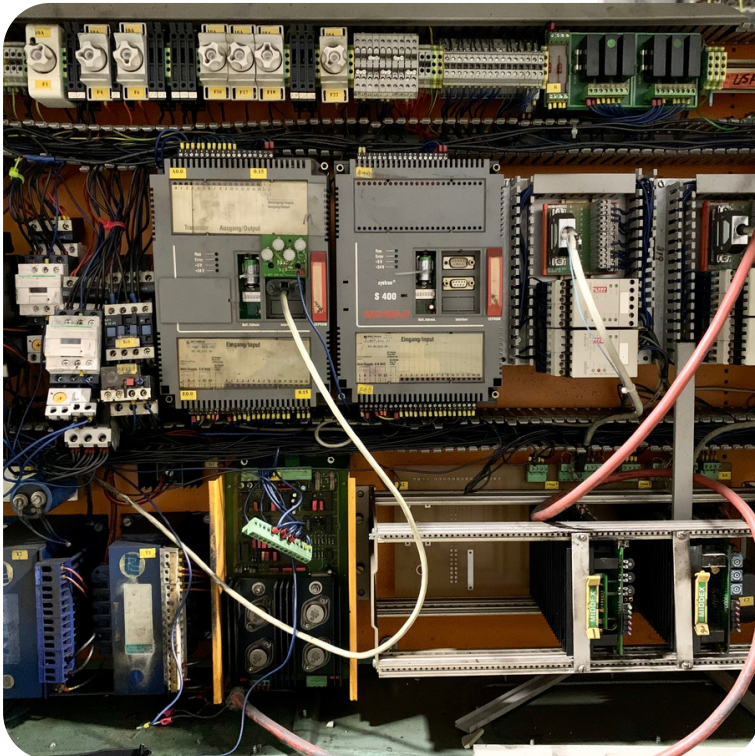
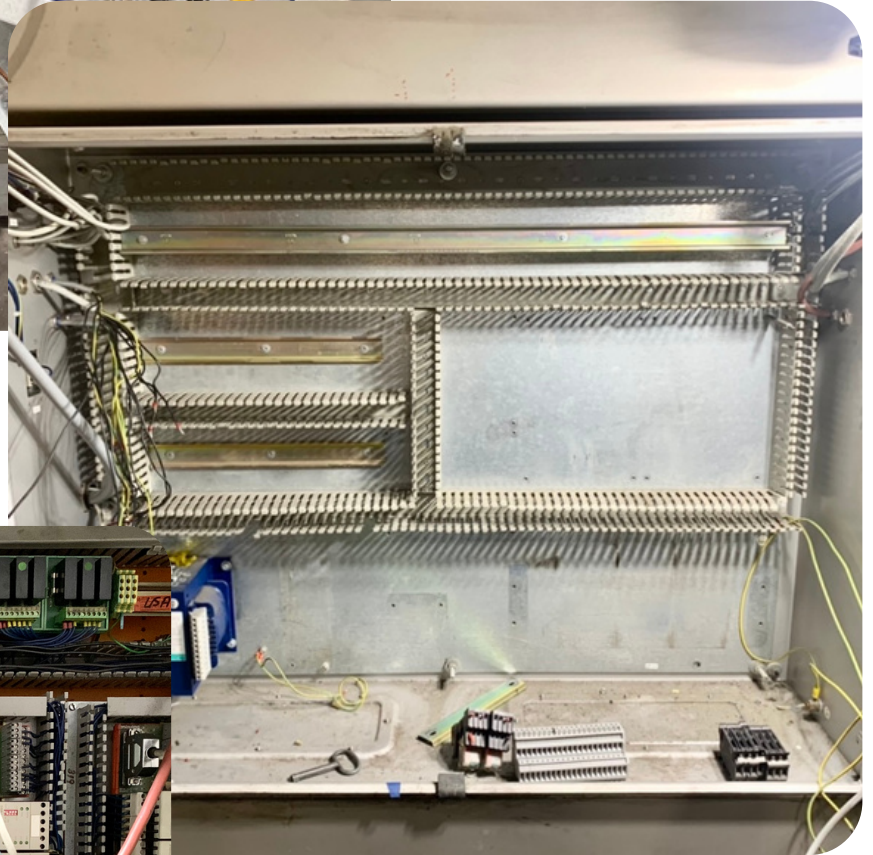
Do you have an Akemat U4 that could use an upgrade? Equipment, Ltd. is giving new life to older U4's by converting them to CNC. This machine is the first of it's kind with all new CNC drives, an HMI touch screen display, and all new operating software. No matter the condition, send us your machine and our technicians will have it running like new again in two weeks.

# About the Conversion Process

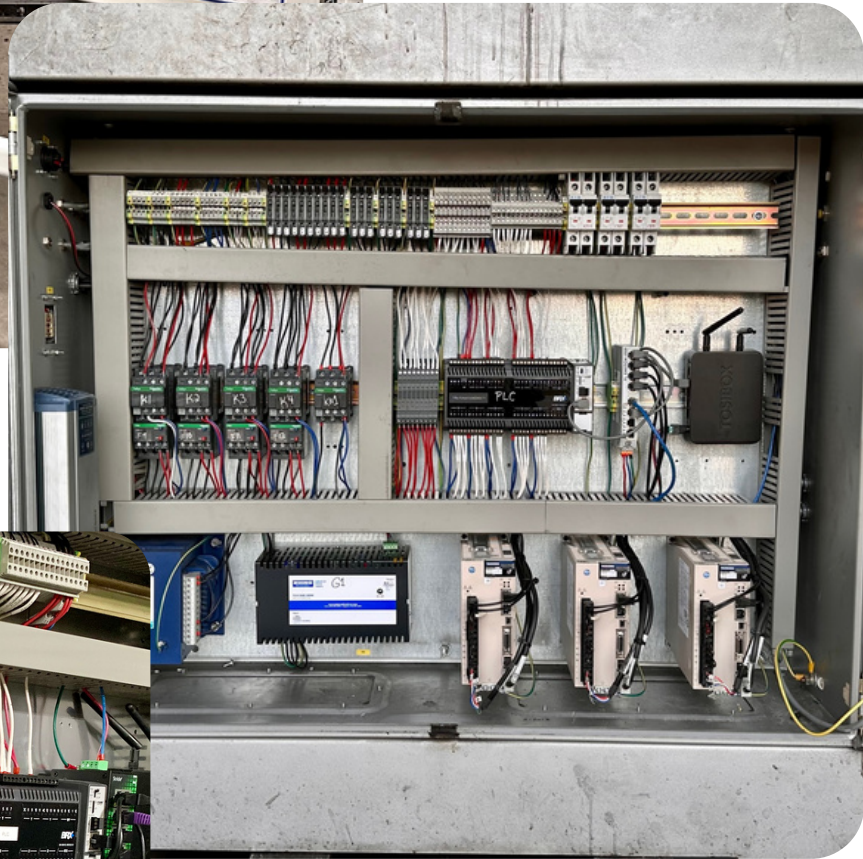


Our technicians begin by removing all the previous wiring and dated electronics from the machine in preparation for the new CNC set up. Once the new drives, contactors, heaters, communication switch, PLC, power supply, and the HMI touch screen have been mounted into place, everything can be wired up. The technicians will then calibrate the machine and test grind extensively before sending it back out for 30 more years of grinding.

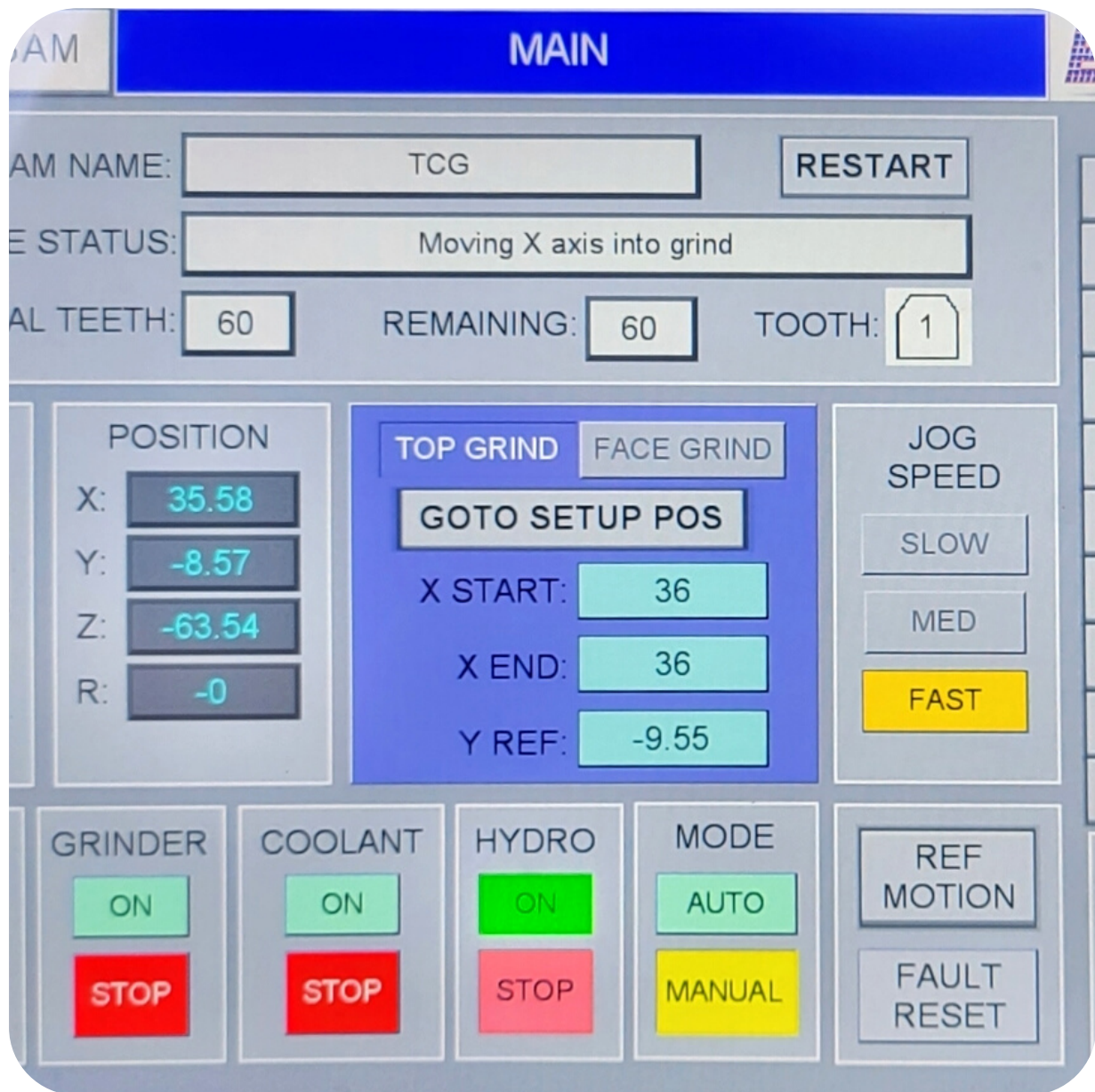
# Before the Conversion



# After the Conversion



# Conversion Capabilities



## New Capabilities:

- Top grinding and face grinding
- Steel relieving and seat pocket grinding
- Graphical user interface with HMI touch screen
- Simplified programming software
- Tooth configurations of any style, capable in one revolution.

# Contact Information

**Telephone:** 828-328-8104

**Toll Free:** 1-800-533-2006

**Fax:** 828-322-4928

**Email:** [sales@equipmentltd.com](mailto:sales@equipmentltd.com)

**Mailing Address:**

311 15th Street SW  
Hickory, NC 28602

**P.O. Box** 3508

Hickory, NC 28603

**Website:** [www.sawgrinder.com](http://www.sawgrinder.com)

**Facebook:** [www.facebook.com/equipmentltd](http://www.facebook.com/equipmentltd)

**Instagram Handle:** @equipment\_ltd

**Youtube:** [www.youtube.com/equipmentltd](http://www.youtube.com/equipmentltd)